

6FM150MV-X 12V 150Ah(10hr)



The rechargeable batteries are lead-lead dioxide systems. The dilute sulfuric acid electrolyte is absorbed by separators and plates and thus immobilized. Should the battery be accidentally overcharged producing hydrogen and oxygen, special one-way valves allow the gases to escape thus avoiding excessive pressure build-up. Otherwise, the battery is completely sealed and is, therefore, maintenance-free, leak proof and usable in any position.

Battery Construction

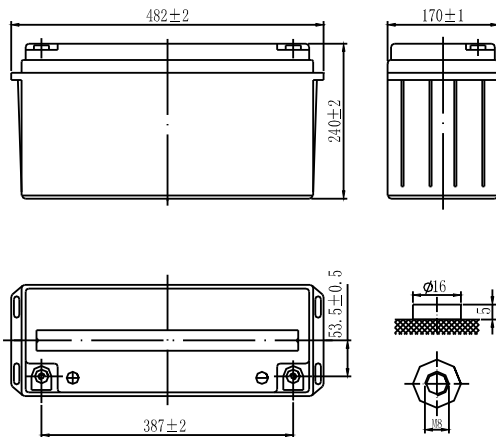
| | | | | | | | | |
|--------------|----------------|----------------|-----------|-------|--------------|----------|------------|---------------|
| Component | Positive plate | Negative plate | Container | Cover | Safety valve | Terminal | Separator | Electrolyte |
| Raw material | Lead dioxide | Lead | ABS | ABS | Rubber | Copper | Fiberglass | Sulfuric acid |

General Features

- Absorbent Glass Mat (AGM) technology for efficient gas recombination of up to 99% and freedom from electrolyte maintenance or water adding.
- Not restricted for air transport-complies with IATA/ICAO Special Provision A67.
- UL-recognized component.
- Can be mounted in any orientation.
- Computer designed lead, calcium tin alloy grid for high power density.
- Long service life, float or cyclic applications.
- Maintenance-free operation.
- Low self discharge.

Dimensions and Weight

| | |
|--------------------------|------------|
| Length(mm / inch) | 482 / 19.0 |
| Width(mm / inch) | 170 / 6.69 |
| Height(mm / inch) | 240 / 9.45 |
| Total Height(mm / inch) | 240 / 9.45 |
| Approx. Weight(Kg / lbs) | 42.5/ 93.7 |



Performance Characteristics

| | |
|--|--------------|
| Nominal Voltage | 12V |
| Number of cell | 6 |
| Design Life | 8 years |
| Nominal Capacity 77°F(25°C) | |
| 10 hour rate (15.3A, 10.8V) | 153Ah |
| 5 hour rate (26.7A, 10.5V) | 133.5Ah |
| 1 hour rate (98.6A, 9.6V) | 98.6Ah |
| Internal Resistance | |
| Fully Charged battery 77°F(25°C) | 4mOhms |
| Self-Discharge | |
| 3% of capacity declined per month at 20°C(average) | |
| Operating Temperature Range | |
| Discharge | -20~60°C |
| Charge | -10~60°C |
| Storage | -20~60°C |
| Max. Discharge Current 77°F(25°C) | 1000A(5s) |
| Short Circuit Current | 2800A |
| Charge Methods: Constant Voltage Charge 77°F(25°C) | |
| Cycle use | 2.30-2.35VPC |
| Maximum charging current | 45A |
| Temperature compensation | -30mV/°C |
| Standby use | 2.23-2.27VPC |
| Temperature compensation | -20mV/°C |

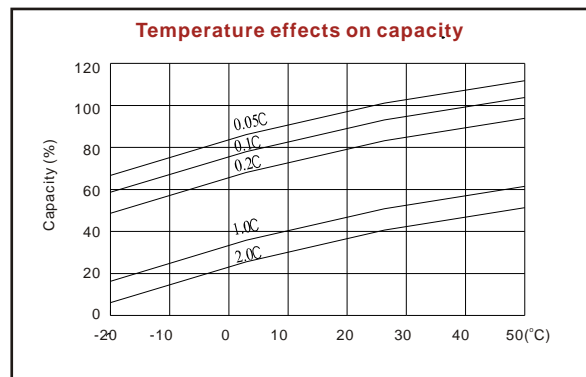
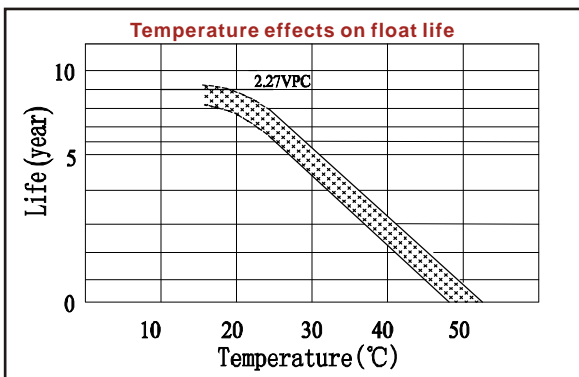
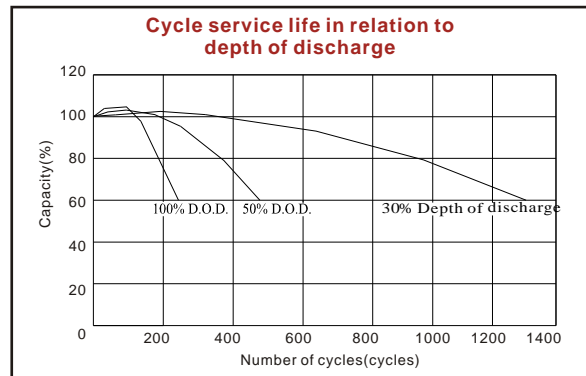
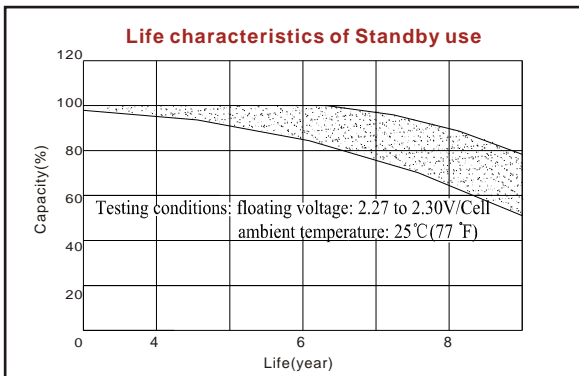
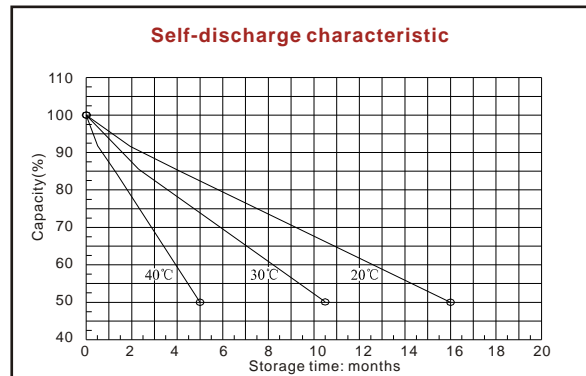
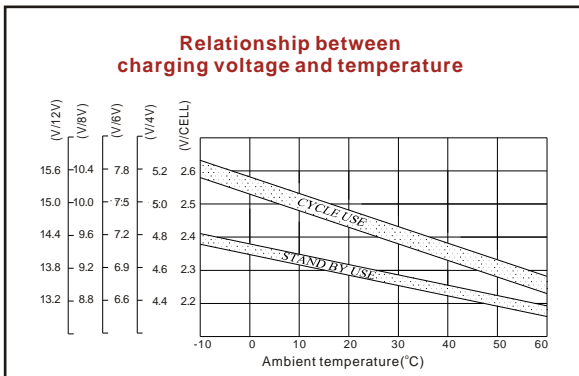
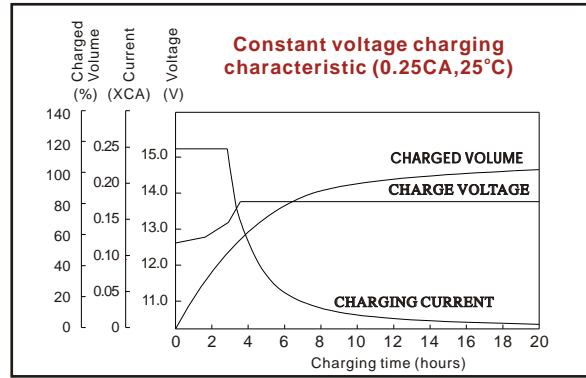
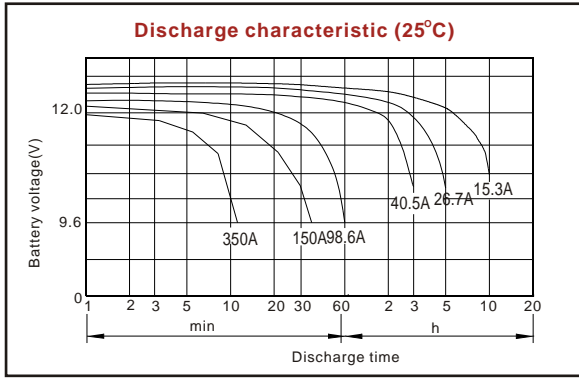
Discharge Constant Current (Amperes at 77°F25°C)

| End point volts/cell | 10min | 15min | 30min | 45min | 1h | 3h | 5h | 10h |
|----------------------|-------|-------|-------|-------|------|------|------|------|
| 1.60V/cell | 397.5 | 300.0 | 172.5 | 124.1 | 98.6 | 44.7 | 29.1 | 16.1 |
| 1.65V/cell | 366.2 | 280.5 | 163.4 | 119.1 | 95.2 | 43.4 | 28.1 | 15.9 |
| 1.70V/cell | 339.3 | 263.8 | 154.9 | 116.2 | 92.1 | 41.6 | 27.4 | 15.6 |
| 1.75V/cell | 311.3 | 247.1 | 148.8 | 111.7 | 89.3 | 40.5 | 26.7 | 15.4 |
| 1.80V/cell | 283.3 | 226.2 | 143.3 | 107.7 | 85.3 | 39.8 | 26.0 | 15.3 |

Discharge Constant Power (Watts at 77°F25°C)

| End point volts/cell | 10min | 15min | 30min | 45min | 1h | 3h | 5h | 10h |
|----------------------|-------|-------|-------|-------|-------|------|------|------|
| 1.60V/cell | 675.7 | 524.9 | 314.5 | 230.3 | 185.3 | 85.4 | 56.1 | 31.6 |
| 1.65V/cell | 636.9 | 499.1 | 300.0 | 222.1 | 179.9 | 83.3 | 54.4 | 31.3 |
| 1.70V/cell | 595.6 | 473.0 | 286.7 | 218.7 | 175.3 | 80.2 | 53.1 | 30.7 |
| 1.75V/cell | 559.1 | 449.3 | 277.0 | 211.1 | 170.5 | 78.2 | 51.9 | 30.4 |
| 1.80V/cell | 517.1 | 416.4 | 269.0 | 205.3 | 163.7 | 77.1 | 50.8 | 30.2 |

(Note)The above characteristics data are average values obtained within three charge/discharge cycles not the minimum values.



ISO9001:2000

MH25860

G4M19906-9202-E-16

Shenzhen Center Power Tech. Co., Ltd.
 Center Power Industrial Park, Tongfu Industrial District Dapeng Town, 518120 Shenzhen, China
 Tel: (+86-755) 8431 8088 Fax: (+86-755) 84318038 E-mail: sales@vision-batt.com

www.vision-batt.com